

RPG

CEAT
SPECIALTY



YOUR **TRUSTED PARTNER**

OFF THE ROAD TYRES



INDEX

Sr.No.	Topic	Page No.
1.	Size Index	3
2.	Company Profile	7
3.	Quality Systems & Certifications	8
4.	General Information	9
5.	OTR Nomenclature And Type Of Service	12
6.	Tyre Care and Maintenance Guidelines	13
7.	Definition of Terms for Off Road Tyres	15
8.	Pressure Conversion	16
9.	Unit Conversion Table	16

Sr.No.	Topic	Page No.
10.	Earthmover Tyres	
	MINEMAX - ML	20
	ROCK-XL - TRA CODE:E4/L4	21
	ROCK-XL - ML	22
	TRAC-XL - TRA CODE:E3/L3	23
	TRAC-XL - TRA CODE:E3/L3	24
	GRIP MASTER-XL -	25
	BHL - TRA CODE:IND-3	26
	GRIP MASTER-ND - TRA CODE:E3/L3	27
	GRADER-XL - TRA CODE:G2/L2	28
	GRADER XL PLUS	29
	TYROCK	30
	GRIP MASTER	31
	CT SUPER	32
	SLICK 431	33
	SLICK 404 - TRA CODE:L5S	34
	TRAC-XL	35
	LIFT PRO	36
	LOADER-XL - TRACODE:G2/L2	37
	MPT 800	38
11	Construction Tyres	
	GRIP MASTER LOADER H.D.	40
	GRIP MASTER LOADER	41
	COMPACTOR-XL	42
	C 305 - TRA CODE: R3	43
	TYROCK-XL - TRA CODE: R4	44
	MPT 602	45
	LOADER PRO	46
	GRIP X HD	47
12	Ports & Industrial Tyres	
	PORT PRO RX - TRA CODE: IND-4	50
	PORT-PRO TX - TRA CODE: IND-3	51
	PORT-PRO SL - TRA CODE: IND-4	52
	ROCK-XL - TRA CODE: IND-3	53
	SLICK 404 - TRA CODE: L5S	54
	ELEVATA	55
	PORT XL PLUS - TRA CODE: IND-4.5	56
	GRIP MASTER-ND - TRA CODE: IND-3	57
	SLICK 431 - TRA CODE: L4S	58
	PORT-PRO SL - TRA CODE: IND-5	59



SIZE INDEX

Rim Dia	Size	Tread Pattern	Page
9"	6.00 - 9/6.90 - 9	ELEVATA	55
10"	6.50-10	ELEVATA	55
12"	7.00-12	ELEVATA	55
	7.00-12	SLICK 431	30
15"	8.25-15	ELEVATA	55
16"	9.00-16	BHL	26
16.5"	10-16.5	GRIP MASTER LOADER	41
	10-16.5	LOADER PRO	46
	10-16.5	GRIP X HD	47
	10-16.5	GRIP MASTER LOADER H.D.	40
	12-16.5	GRIP MASTER LOADER	41
	12-16.5	GRIP MASTER LOADER H.D.	40
18"	12.5/80 - 18	TYROCK	30
	12.5 - 18	MPT 602	45
20"	9.00 - 20	SLICK 431	33
	9.00 - 20	CT SUPER	32
	11.00 - 20	MINEMAX	20
	12.00 - 20	MINEMAX	20
	11.00 - 20	ROCK-XL	22
	10.00 - 20	MPT 602	45
	11.00 - 20	COMPACTOR-XL	42
	12.00 - 20	GRIP MASTER	31
	12.00 - 20	SLICK 404	34/54
	12.5 - 20	MPT 602	45
	14.00 - 20	TRAC-XL	23
	405/70 - 20	MPT 602	45
	405/70 - 20	MPT 800	38
	405/70 - 20	TRAC-XL	35
24"	12.00 - 24	SLICK 404	34/54
	12.00 - 24	PORT PRO RX	50
	12.00 - 24	ROCK-XL	22
	12.00 - 24	MINEMAX	20
	12-16.5	LOADER PRO	46
	12-16.5	GRIP X HD	47
	13.00 - 24	GRADER-XL	28
	13.00-24	GRADER-XL PLUS	29
	14.00 - 24	GRIP MASTER-ND	27/57
	14.00 - 24	GRADER-XL	28
	15.5/80-24	LIFT PRO	36
	19.5L - 24	TYROCK-XL	44
	405/70 - 24	MPT 602	45
	405/70 - 24	MPT 800	38

Rim Dia	Size	Tread Pattern	Page
25"	14.00 - 25	GRIP MASTER-ND	27
	15.5 - 25	LOADER-XL	37
	16.00 - 25	ROCK-XL	21/53
	16.00 - 25	SLICK 431	58
	17.5 - 25	SLICK 404	34/54
	17.5 - 25	TRAC-XL	23
	17.5 - 25	LOADER-XL	37
	18.00 - 25	GRIP MASTER-ND	57
	18.00 - 25	GRIP MASTER-XL	25
25"	18.00 - 25	ROCK-XL	21
	18.00 - 25	SLICK 404	34/54
	18.00 - 25	PORT PRO RX	50
	18.00 - 25	PORT PRO TX	51
	18.00 - 25	PORT PRO SL	52/59
	18.00 - 25	PORT XL PLUS	56
	20.5 - 25	TRAC-XL	23
	20.5 - 25	LOADER-XL	37
	21.00 - 25	PORT-PRO TX	51
	23.5 - 25	TRAC-XL	23
	26.5 - 25	TRAC-XL	23
	29.5 - 25	TRAC-XL	23
	26"	23.1 - 26	C 305
28"	16.9 - 28	TYROCK-XL	44
33"	18.00 - 33	ROCK-XL	21
	18.00 - 33	PORT PRO RX	50
	18.00 - 33	PORT-PRO SL	52
35"	21.00 - 35	PORT-PRO TX	51
	21.00 - 35	ROCK-XL	21
	24.00 - 35	ROCK-XL	21



CEAT
SPECIALTY



COMPANY PROFILE

CEAT Limited is one of India's leading tyre manufacturers with more than one billion USD revenue in 2016. Established in 1924, in Turin, Italy, CEAT's India operations started in 1958. In 1982, it became a part of the USD 3.5 billion RPG Group.

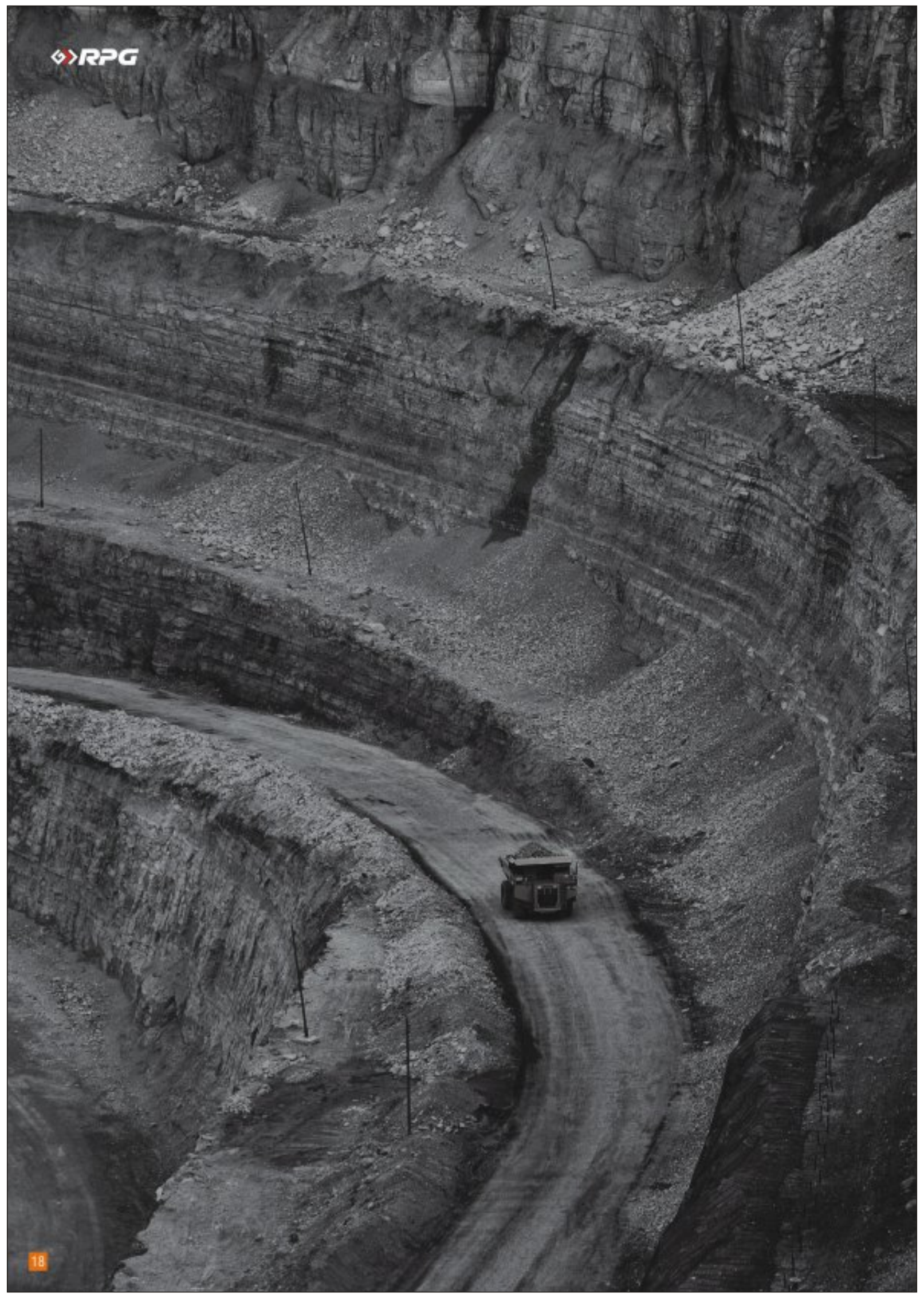
CEAT Specialty Tyres Ltd. is a subsidiary of CEAT Limited and manufactures and distributes bias & radial OTR tyres in the domestic as well as the international market.

Manufacturing facilities: 5 in India and 2 in Sri Lanka with a daily production of over 95,000 tyres. These plants employ about 6,000 people and produce a broad range of products for passenger, light truck, truck, bus & commercial vehicles. For the specialty group, these facilities produce agricultural, industrial, construction, mining, earthmover and other special application off road tyres.

The company is committed to research and development. This commitment enables it to remain at the technological forefront of the tyre industry. With state-of-the-art research, design and in-house testing facilities, CEAT has been developing high quality tyres and is able to address the needs of customers around the world.

CEAT has a major share of the Indian market specially with OEMs in the OTR, truck & agriculture segment where tyres are exposed to extreme and challenging conditions. Since 1964 CEAT has been exporting tyres and today it has satisfied costumers across countries globally .

In order to better serve its North American customers CEAT Specialty Tyres Ltd. has established 'CEAT Specialty Tyres Inc.', which is a wholly owned subsidiary in USA.





EARTHMOVER



**NEW
LAUNCH**

MINEMAX ML



Features

- Non-directional pattern with Fin type configuration, which provides better traction and tread cooling
- Larger foot-print with respect to competition
- Heat, cut and weather resistant compound for better mileage and extra protection from cut & snag
- Reinforced for puncture resistance

Size	Type	Rim Width in	Unloaded Dimension					PR	Tread Depth mm 32 nds	RCI	Load/ Speed Index	Load Capacity			
			SW	OD	Static Loaded Radius	Rolling Circum	Single Load					Dual Load			
			mm in	mm in	mm in	mm in	Max Load					Infl. Prs.	Max Load	Infl. Prs.	
			kg/lbs	bar/psi		bar/psi									
11.00-20	TT	8.0	293	1104	524	3335	18	24	36	150/146G	33350	8.3	3000	7.6	
			12	43	21	131		30			7385	120	6615	110	
12.00-20	TT	8.5	316	1154	541	3462	20	23	36	155/151F	3875	8.6	3450	7.9	
			12	45	21	136		29			8540	125	7605	115	
12.00-24	TT	8.5	315	1247	580	3740	20	24	39	160/155F	4500	8.6	3875	7.9	
			12	49	23	147		30			9920	125	8540	115	

All tyres conform to standards manual of Indian Tyre Technical Advisory Committee (ITTAC) & TRA



ROCK-XL

TRA CODE: E4/L4

Features

- Deep tread and sturdy lug design together with a robust heavy duty casing makes this tyre ideal for severe heavy duty applications in mining, quarrying and rock excavation applications.
- Self cleaning sturdy lugs are designed for better traction.
- More rubber in the footprint offers better penetration resistance and better mileage.
- Specially formulated heat and cut resistant compound resists cuts and snags and provides optimum wear in a variety of operating conditions.

Size	Type	Rim Width in	Flange Height in	Unloaded Dimension		Load Capacity								
				SW	OD	Transport 50kmph/(30mph)		Transport 10kmph/(5mph)		RCI				
				mm in	mm in	Max Load kg/lbs	Infl. Prs. bar/psi	Max Load kg/lbs	Infl. Prs. bar/psi					
16.00-25	TL	11.25	2.0	432 17.0	1493 58.8	682 27.0	4420 174.0	32	29 37	42	7300 16090	6.5 94	12500 27560	8.75 127
18.00-25	TL	13.00	2.5	498 19.6	1673 65.9	764 30.1	4952 195.0	40	56 70	44	9750 21500	7.0 102	17000 37490	9.5 138
18.00-33	TL	13.00	2.5	498 19.6	1877 73.9	866 34.1	5556 218.7	40	58 73	46	11200 24690	7.0 102	19500 42990	9.5 138
21.00-25	TL	15.00	3.0	585 23.0	1759 69.3	800 31.5	5140 202.4	40	40 50.4	45	11850 26125	6.25 91	20600 45415	8.25 120
21.00-35	TL	15.00	3.0	595 23.4	2052 80.8	953 37.5	6125 241	36	57 72	48	14000 30865	6.25 91	24300 53570	8.25 120
24.00-35	TL	17	3.5	653 25.7	2175 85.6	998 39.3	6390 251.5	48	60 75	49	18500 40785	6.5 95	31500 69445	8.5 125

All tyres conform to TRA and ETRTO Standards



ROCK-XL

ML



Features

- Mining and logging tyres which can also be used in intermittent highway service.
- The pattern is designed to carry heavy loads on all types of surfaces such as rock, mud or highways.
- Special tread design provides good traction and high mileage. The cap base construction coupled with a strong nylon casing ensures cooler running and long life.

Size	Type	Rim Width in	Flange Height in	Unloaded Dimension				PR	Tread Depth mm 32 nds	RCI	Load Capacity		
				SW	OD	Static Loaded Radius	Rolling Circum				(on hard improved surfaces)		
				mm in	mm in	mm in	mm in				Load/Speed Index	Infl. Pressure bar/psi	Max Load kg/lbs
11.00-20	TT	8	1.3	293	1106	519	3273	18	24	36	146G	7.6	3000
				11.5	43.5	20.4	128.9					110	6600
12.00-24	TT	8.5	1.3	328	1257	590	3720	20	23	39	155F	7.9	3875
				12.9	49.5	23.2	146.5					115	8540

All tyres conform to standards manual of Indian Tyre Technical Advisory Committee (ITTAC) & TRA

Notes: 1) These tyres are not intended for sustained highway service 2) Distance must not exceed 90 km / 55 mph in any 1st hour period of run.

TRAC-XL

TRA CODE: E3/L3



Features

- Heavy duty tyre for dumpers, loaders and dozers for applications on rock, coal and log strewn terrain.
- Specially designed non directional tread and wide ground contact area provide excellent grip, traction, and high mileage even on the most severe terrain.

Size	Type	Rim Width in	Flange Height in	Unloaded Dimension		Load Capacity									
				SW	OD	Static Loaded Radius	Rolling Circum	PR	Tread Depth mm 32 nds	RCI	Transport 50kmph/(30mph)		Transport 10kmph/(5mph)		
				mm in	mm in	mm in	mm in				Max Load kg/lbs	Infl. Prs. bar/psi	Max Load kg/lbs	Infl. Prs. bar/psi	
14.00-20	TT	10	2.0	382	1266	583	3750	22	27	34	39	4365	5.5	8230	8.5
				15.5	49.9	23.0	147.6					9625	80	18145	125
17.5-25	TT	14	1.5	445	1348	624	3990	16	27	34	40	4250	3	7300	4.75
				17.5	53.08	24.6	157.1					9350	44	16100	69
20.5-25	TL	17	2	521	1493	686	4416	20	30	38	42	5450	2.75	8250	3.5
				20.5	58.8	27.0	173.8					12000	40	18200	51
23.5-25	TT	19.5	2.5	597	1617	740	4786	20	37	46	43	6150	2.25	9500	3
				23.5	63.7	29.1	188.4					13600	33	20900	44
26.5-25	TL	22	3.0	677	1750	798	5125	28	40	50	45	10000	3.5	15500	4.75
				26.7	68.9	31.4	201.8					22000	51	34170	69

All tyres conform to TRA and ETRTO Standards

Note : PLY RATING other than mentioned can be produced for special requirements.



TRAC-XL

TRA CODE: E3/L3

Features

- Massive heavy duty tyre for dumpers, loaders and dozers for applications on rock, coal and log strewn terrain.
- Specially designed non directional tread and wide ground contact area provide excellent grip, traction, and high mileage even on the most severe terrain.

Size	Type	Rim Width in	Flange Height in	Unloaded Dimension		Static Loaded Radius mm in	Rolling Circum mm in	PR	Tread Depth mm 32 nds	RCI	Load Capacity			
				SW	OD						Transport 50kmph/(30mph)		Transport 10kmph/(5mph)	
				mm in	mm in						Max Load kg/lbs	Infl. Prs. bar/psi	Max Load kg/lbs	Infl. Prs. bar/psi
29.5-25	TL	25	3.5	762 30	1878 73.9	821 32.3	5435 214	32	48 60	46	12500 27560	3.75 54	19250 42450	5 73

All tyres conform to TRA and ETRTO Standards



GRIP MASTER-XL



Features

- Extra deep tread and robust muscular casing makes this tyre ideal for severe heavy duty applications in mining, quarrying and rock excavations.
- Specially formulated heat and cut resistant compound resists cuts snags and provides optimum wear in a variety of operating conditions.

Size	Type	Rim Width in	Flange Height in	Unloaded Dimension					PR	Tread Depth mm 32 nds	RCI	Load Capacity			
				SW	OD	Static Loaded Radius	Rolling Circum	Transport 50kmph/(30mph)				Transport 10kmph/(5mph)			
				mm in	mm in	mm in	mm in	Max Load kgs/lb				Infl. Pres. bar/psi	Max Load kgs/lb	Infl. Pres. bar/psi	
18.00-25	TL	13.00	2.5	498	1673	764	4952	32	56	44	8750	5.57	15000	7.5	
				19.6	65.9	30.1	195.0	40			70	19300	83	33100	109
											9750	7.0	17000	9.5	
											21500	102	37480	138	

All tyres conform to TRA and ETRTO Standards

Note : PLY RATING other than mentioned can be produced for special requirements

BHL

TRA CODE: IND-3

Features

- Specially designed pattern for On/Off road performance.
- Strong nylon casing.
- Cut resistant tread compound.
- Longer tyre life, improved cut/chip resistance.

Size	Type	Rim Width in	Unloaded Dimension					PR	Tread Depth mm 32 nds	RCI	Load Capacity	
			SW	OD	Static Loaded Radius	Rolling Circum	Infl. Pres.				Max Load	
			mm in	mm in	mm in	mm in	bar/psi				kg/lbs	
9.00-16	TT	6.50HX16	263 10.4	925 36.4	426 16.8	2683 105.6	16	20 25	33	7.25 105	2290 5038	

All tyres conform to TRA and ETRTO Standards

GRIP MASTER-ND

TRA CODE: E3/L3

Features

- Designed for heavy duty jobs to support heavy loads and extreme working conditions.
- Specially designed non directional tread ensures high hourage even on the most abrasive surfaces.
- Special heat, cut and weather resistant compound makes the tyre capable of withstanding cuts, nags and bruises.
- A heavy duty nylon casing increases strength and durability while providing multiple retreads.

Size	Type	Rim Width in	Flange Height in	Unloaded Dimension				PR	Tread Depth mm 32 nds	RCI	Load Capacity			
				SW	OD	Static Loaded Radius	Rolling Circum				Transport 50kmph/(30mph)		Transport 10kmph/(5mph)	
				mm in	mm in	mm in	mm in				Max Load kg/lbs	Infl. Prs. bar/psi	Max Load kg/lbs	Infl. Prs. bar/psi
14.00-24	TT/ TL	10.00	1.5	385 15.2	1368 53.9	630 24.8	4050 159.4	20	26	41	4625 10200	4.75 69	8500 18740	7.0 102
								24			5150 11400	5.75 83	9500 20945	8.5 123
								28			5600 12345	6.50 94	10000 22045	9.25 134
14.00-25	TT/ TL	10.00	1.5	385 15.2	1368 53.9	630 24.8	4050 159.4	20	25	41	4625 10200	4.75 69	8500 18740	7.00 102
								24			5150 11400	5.75 83	9500 20945	8.5 123

All tyres conform to TRA and ETRTO Standards

Note : PLY RATING other than mentioned can be produced for special requirements



GRADER-XL

TRA CODE: G2/L2



Features

- Sturdy, robust tyre for the drive position.
- Superior tread and sidewall compound coupled with weather and ozone resistance.
- Strong nylon casing ensures smooth and trouble free service in the most severe operating conditions.
- Ideal for use in motor graders and loaders.

Size	Type	Rim Width in	Flange Height in	Unloaded Dimension				PR	Tread Depth mm 32 nds	RCI	Load Capacity			
				SW	OD	Static Loaded Radius	Rolling Circum				GRADER SERVICE		LOADER SERVICE	
				mm in	mm in	mm in	mm in				40kmph/(25mph)		10kmph/(5mph)	
											Max Load kg/lbs	Infl. Prs. bar/psi	Max Load kg/lbs	Infl. Prs. bar/psi
13.00-24	TT	8.00	1.4	333	1278	582	3783	12	23 29	39	2725	3.0	5600	4.5
	TL			13.1	50.3	22.9	148.9	16			6000	44.0	12350	65
14.00-24	TT	8.00	1.4	362	1348	614	3990	12	24	40	3075	2.5	6300	4.25
	TL			14.3	53.1	24.2	157.1	16			31	6800	36.0	13890
											3650	3.5	7300	5.5
											8050	51	16090	80

All tyres conform to TRA and ETRTO Standards

GRADER XL PLUS



Features

- Grader tyre for mining, road & civil construction applications.
- Specially designed tread with heavy center mass for heavy duty service.
- Strong casing for increased stability for improved tyre performance.

Size	Type	Unloaded Dimension						Load Capacity			
		Rim Width in	SW mm in	OD mm in	Static Loaded Radius mm in	Rolling Circum mm in	PR	Tread Depth mm 32 nds	RCI	Max Load kgs/lbs	Infl. Pres. bar/psi
13.00-24	TT	8.00	351 13.81	1301 84.5	610 24	4008 157.8	12	23 29	39	2725 6000	3 44

All tyres conform to TRA and ETRTO Standards

TYROCK

Features

- Tread pattern is designed for very good traction and self cleaning properties.
- Specially designed for front wheel of Backhoe Loaders and Wheel Loaders etc...
- Suitable for both free rolling and drive wheel applications.
- Drive tyres with extra wide lugs give excellent resistance to tearing and cracking.
- A tough nylon casing and a special tread compound give best result in industrial use as well as off-the-road and construction sites.
- Tread pattern design for very good traction and self cleaning properties.

Size	Type	Rim Width in	Unloaded Dimension					PR	Infl. Prs. bar/psi	Tread Depth mm 32 nds	RCI	Load Capacity			
			SW	OD	Static Loaded Radius	Rolling Circum	Free Rolling Wheel					Drive Wheel			
			mm in	mm in	mm in	mm in	Load Index & Speed symbol					Max Load kg/lbs	Load Index Speed Symbol	Max Load kg/lbs	
12.5/80-18	TL	9.0	308 38.9	988 12.1	465 17.9	2900 114.1	12	3.7 54	25 31	34	138 A8	2360 5200	125 A8	1650 3635	

All tyres conform to TRA and ETRTO Standards



GRIP MASTER

Features

- Suitable for intermittent highway service.
- Special tread design provides good traction & high mileage, superior resistance to wear and the tough nylon casing ensures trouble free long life.
- Compound formulated for heat and cut resistance.

Size	Type	Unloaded Dimension								Load Capacity	
		Rim Width in	SW	OD	Static Loaded Radius	Rolling Circum	PR	Tread Depth mm 32 nds	RCI	Infl. Prs. bar/psi	Max Load kgs/lbs
			mm in	mm in	mm in	mm in					
12.00-20	TT	8.5	320	1150	542	3450	18	22	37	7.2	3350
			12.6	45.3	21.3	135.8		28		110	7385

All tyres conform to TRA and ETRTO Standards



CT SUPER



Features

- Mining and logging tyres which can also be used in intermittent highway service.
- Tread pattern is designed to carry heavy loads on all types of surfaces such as rock, mud or on highways.
- Special tread design provide good traction and high mileage. Cap base construction coupled with a strong nylon casing ensure cooler running and long life.

Size	Type	Unloaded Dimension							Load Capacity		
		Rim Width in	SW	OD	Static Loaded Radius	Rolling Circum	PR	Tread Depth mm 32 nds	RCI	Infl. Prs.	Max Load
			mm in	mm in	mm in	mm in				bar/psi	kgs/lbs
9.00-20	TT	7.0	265 10.4	1045 41.1	497 19.5	3170 124.8	16	21 26	35	7.25 105	2325 5125

All tyres conform to TRA and ETRTO Standards



SLICK 431



Features

- Specially designed for underground mines, this tyre is capable of carrying load under the most severe operating conditions.
- Specially formulated deep tread with reinforced sidewalls offer superior resistance to wear and damage, ensuring high mileage.
- Flatter tread with large tread width provide high ground contact area for good traction.

Size	Type	Rim Width in	Unloaded Dimension		Static Loaded Radius mm in	Rolling Circum mm in	PR	Tread Depth mm 32 nds	RCI	Infl. Prs. bar/psi	Load Capacity		
			SW	OD							10kmph/ (5mph)	15kmph/ (10mph)	25kmph/ (15mph)
			mm in	mm in							Max Load kg/lbs	Max Load kg/lbs	Max Load kg/lbs
9.00-20	TL	7.0	259 10.2	1033 40.7	477 18.8	3048 120.0	16	21 27	35	7.25 105	3170 6990	3965 8740	6340 13980

All tyres conform to TRA and ETRTO Standards



SLICK 404

TRA CODE: L55



Features

- Specially designed for underground mines, heavy duty forklifts and loaders.
- Extra deep tread with specially formulated compound and reinforced sidewalls offer superior resistance to wear and damage, ensuring high mileage.
- Flatter tread with large tread width provide high ground contact area for good traction.

Size	Type	Rim Width in	Flange Height in	Unloaded Dimension				PR	Tread Depth mm 32 nds	RCI	Infl. Prs. bar/psi	Load Capacity		
				SW	OD	Static Loaded Radius	Rolling Circum					10kmph/ (5mph)	15kmph/ (10mph)	25kmph/ (15mph)
				mm in	mm in	mm in	mm in					Max Load kg/lbs	Max Load kg/lbs	Max Load kg/lbs
12.00-20	TT	8.5	-	315 12.4	1163 45.8	538 21.2	3433 135.2	20	54 68	37	7.75 112	6000 13230	5220 11510	4800 10580
12.00-24	TT	8.5	-	310 12.2	1270 50	592 23.3	3759 148.0	20	54 68	39	8.25 120	6900 15210	6000 13230	5520 12170
17.5-25	TL	14.00	1.5	445 17.5	1399 55.08	648 25.5	4141 163.0	20	63 79	41	5.75 83	8250 18200	7180 15830	6600 14550
18.00-25	TL	13	2.5	498 19.6	1673 65.9	768 30.2	4952 195.0	32	77	44	7.5 109	15000 33100	13050 28770	12000 26455
								40						

All tyres conform to TRA and ETRTO Standards

Note : PLY RATING other than mentioned can be produced for special requirements

TRAC-XL

Features

- Deep tread with continuous lug bars.
- Optimized lug geometry to ensure uniform wear.
- Continuous tie bars to reduce lug flexing & provide a long service life.
- Puncture resistant

Size	Type	Rim Width in	Unloaded Dimension			Load Capacity							
			SW	OD	Static Loaded Radius	Rolling Circum	PR	Tread Depth mm 32 nds	RCI	Transport 50kmph/30mph		Loading 10kmph/5mph	
			mm in	mm in	mm in	mm in				Max Load kgs/lbs	Infl. Prs. bar/psi	Max Load kgs/lbs	Infl. Prs. bar/psi
405/70-20 (16.0/70-20)	TL	13.00	400 15.7	1088 42.8	480 18.9	3290 129.5	16	25 31	36.0	5735 12615	5.15 74	3515 7730	4 58

All tyres conform to TRA and ETRTO Standards



LIFT PRO

Features

- Agro-industrial tyre for loading applications with telehandlers.
- Special tread design provides good traction and high mileage. It exhibits excellent traction and self-cleaning properties.
- Strong casing for better and improved performance.
- Deep under tread for improved puncture resistance.

Size	Type	Unloaded Dimension							Load Capacity											
		Rim Width in	SW mm in	OD mm in	Static Loaded Radius mm in	Rolling Circum mm in	PR	Tread Depth mm 32 nds	RCI	Free rolling Load index Speed index	Drive Wheel Load index Speed index	Infl. Prs. bar/psi	Recommended load, kg(lbs)							
													Foe wheel Speed (kmph/mph)				Drive wheel Speed (kmph/mph)			
													10	20	30	40	10	20	30	40
15.5/80-24	TL	13	395 15.5	1250 49.2	562 21.5	3650 143.7	16	37 47	38	163 A6	151 A6	4 58	6290 13850	5560 12250	4875 10745	4390 9670	4450 9800	3930 8660	3450 7600	3110 6850

All tyres conform to TRA and ETRTO Standards

LOADER-XL

TRA CODE: G2/L2



Features

- Suitable for on and off the road application
- Used in crane applications and fire / rescue vehicles
- High speed capability.
- Excellent traction and handling response with strong casing. A tough wide base tyre provides traction as well as high flotation.
- Superior compound and tough casing makes it ideal for rugged service.

Size	Type	Rim Width in	Flange Height in	Unloaded Dimension					PR	Tread Depth mm 32 nds	RCI	Load Capacity			
				SW	OD	Static Loaded Radius	Rolling Circum	GRADER SERVICE				LOADER SERVICE			
								40kmph/25mph				10kmph/5mph			
				mm in	mm in	mm in	mm in	Max Load kg/lbs				Infl. Prs. bar/psi	Max Load kg/lbs	Infl. Prs. bar/psi	
15.5-25	TT/ TL	12.00	1.3	394	1278	594	3780	12	22	39	2650	2.5	5600	4	
				15.5	50.3	23.4	148.8				5840	36.0	12345	58	
17.5-25	TT/ TL	14.00	1.5	445	1348	614	3990	12	23	40	2900	2.0	6150	3.5	
				17.5	53.1	24.2	157.1	16			29	6400	29.0	13600	51
												3350	3.0	13600	4.7
20.5-25	TT/ TL	17.00	2.0	520	1492	686	4416	12	28	42	3550	1.75	6700	2.5	
				20.5	58.7	27.0	173.8	16			35	7850	25.0	14800	36
												4000	2.25	8250	3.50
												8800.0	33	18200	51

All tyres conform to TRA and ETRTO Standards
GRADER SERVICE: Distance - Unlimited (Speed: 40 kmph/25 mph)
LOADER SERVICE: Distance - 76m/250 ft (Speed: 10kmph/5mph)
DOZER SERVICE: May vary depending on work situations (Speed: 10 kmph/5 mph)
 Note: PLY RATING other than mentioned can be produced for special requirements.



MPT 800

Features

- A tough wide base tyre provides traction as well as high flotation.
- Superior compound and tough casing makes it ideal for rugged service.

Size	Type	Rim Width in	Unloaded Dimension					PR	Tread Depth mm 32 nds	RCI	Infl. Pres. bar/psi	Load Capacity	
			SW mm in	OD mm in	Static Loaded Radius mm in	Rolling Circum mm in	Load Index & Speed symbol					Max Speed kmph/mph	Max Load kg/lbs
405/70-20 (16.0/70-20)	TL	13.00	405 15.9	1098 43.2	505 19.8	3225 126.9	14	32 41	36	3.5 51	149B	50 30	3250 7165
405/70-24 (16.0/70-24)	TL	13.00	405 15.9	1188 46.7	551 21.9	3490 137.4	14	34 43	38	4.0 58	152B	50 30	3550 7825

All tyres conform to TRA and ETRTO Standards



CONSTRUCTION



GRIP MASTER LOADER H.D.

Features

- Premium tyre with increased tread depth, extra thick sidewall for improved traction and puncture resistance.
- Tough nylon casing that provides durability.
- Specially designed rim guards provide greater protection of rim flange area.

Size	Type	Unloaded Dimension					Load Capacity							
		Rim Width in	SW	OD	Static Loaded Radius	Rolling Circum	PR	Tread Depth mm 32 nds	RCI	Infl. Prs. bar/psi	Recommended load, kg(lbs)			
			mm in	mm in	mm in	mm in					Speed, km/h(mph)			
											Static	10 5	15 10	30 20
10-16.5 HD	TL	8.25	264 10.4	773 30.4	358 14.1	2320 91.3	10	20 25	29	5.2 75	3375 7440	2135 4705	1685 3715	1450 3195
12-16.5HD	TL	9.75	307 12.1	831 32.73	383 15.1	2490 98.0	12	23 26	31	5.5 80	4525 9975	2865 6315	2260 4980	1950 4300

All tyres conform to TRA and ETRTO Standards

GRIP MASTER LOADER



Features

- The most durable and versatile skid steer tyre.
- Superior tread compounds provide resistance to chipping, chunking and tear.

Size	Type	Rim Width in	Unloaded Dimension					PR	Tread Depth mm 32 nds	RCI	Infl. Prs. bar/psi	Load Capacity			
			SW	OD	Static Loaded Radius	Rolling Circum	Speed, km/h(mph)								
			mm in	mm in	mm in	mm in	Static					10 5	15 10	30 20	
10-16.5	TL	8.25	264	773	358	2320	8	15	30	4.1	2970	1880	1485	1280	
			10.4	30.4	14.1	91.3	10	19		60	6550	4145	3275	2820	
										75	8850	5600	4420	3800	
										4.5	4015	2540	2005	1725	
12-16.5	TL	9.75	307	831	383	2490	10	18	31	65	8850	5600	4420	3800	
			12.1	32.73	15.1	98	12	23		5.5	4525	2865	2260	1950	
										80	9975	6315	4980	4300	

All tyres conform to TRA and ETRTO Standards



COMPACTOR-XL

Features

- For use in pneumatic road rollers.
- Long service life.

Size	Type	Unloaded Dimension					Load Capacity					
		Rim Width in	SW	OD	Static Loaded Radius	Rolling Circum	PR	Tread Depth mm 32 nds	RCI	Infl. Pres. bar/psi	Speed (kmph/mph)	Load (kgs/lbs)
			mm in	mm in	mm in	mm in						
11.00-20	TT	8.00	296 11.7	1084 42.7	509 20.0	3208 126.3	16	20 25	36	7.25 105	10 5	5450 12000

All tyres conform to TRA and ETRTO Standards

C 305

TRA CODE: R3



Features

- Specially designed multipurpose drive wheel provides high flotation on soft soil.
- Ideal for on the road, industrial and road construction equipment.
- Strong nylon casing, rugged design, and deep tread depth ensures long service life in a variety of operating conditions.

Size	Type	Unloaded Dimension					Rolling Circum mm in	PR Load Index Speed Symbol	Tread Depth mm 32 nds	RCI	Infl. Prs. bar/psi	Load Capacity								
		Rim Width in	SW mm in	OD mm in	Static Loaded Radius mm in	Road Transport						Field operation								
						10 6						20 12	30 19	40 25	50 31	10 6	20 12	10 6		
23.1-26	TL	DW20	587 23.1	1560 61.4	690 27.2	4545 178.9	10PR 149A8	27	43	1.2 17	6830	4460	3650	3180	2970	2700	4160	3560	3180	
											15040	9820	8040	7000	6540	5950	9160	7840	7000	
											1.3 19	7150	4670	3830	3330	3110	2830	4350	3730	3330
												15750	10290	8440	7330	6850	6230	9580	8220	7330
											1.4 20	7480	4880	4000	3480	3250	2960	4550	3900	3480
												16480	10750	8810	7670	7160	6520	10020	8590	7670
											1.5 22	7800	5090	4170	3630	3390	3080	4750	4070	3630
												17180	11210	9190	8000	7470	6780	10460	8960	8000
											1.7 25	8400	5480	4490	3910	3650	3320	5110	4380	3910
												18500	12070	9890	8610	8040	7310	11260	9650	8610
											1.9 28	8990	5870	4810	4180	3910	3560	5470	4690	4180
												19800	12930	10590	9210	8610	7840	12050	10330	9210
2.1 30	9550	6230	5100	4440	4150	3780	5810	4980	4440											
	21040	13720	11230	9780	9140	8330	12800	10970	9780											
2.3 33	10060	6560	5380	4680	4375	3980	6130	5250	4680											
	22160	14450	11850	10310	9640	8770	13500	11560	10310											

All tyres conform to TRA and ETRTO Standards

TYROCK-XL

TRA CODE: R-4



Features

- Specially designed for rear wheel of Backhoe Loaders and Wheel Loaders
- Special stone ejector & casing protector
- Tough nylon casing and a special Industrial tread compound
- Tread pattern design for very good traction and self-cleaning properties.

Size	Type	Rim Width in	Unloaded Dimension			Static Loaded Radius mm in	Rolling Circum mm in	PR load Index Speed Symbol	Tread Depth mm 32 nds	RCI	Load Capacity															
			SW	OD	Infl. Prs. bar/psi						Industrial Use		Agricultural Use													
			mm in	mm in							Constant Load		Cyclic Application		Infl. Prs. bar/psi	Road Transport										
			mm in	mm in							20 12	40 25	20 12	40 25		20 12	40 25									
16.9-28	TT	W15L	440	1430	650	4233	12PR	34	41	2.3	3600	3300	4060	3300	2.1	3380	2520									
			17.3	55.6						25.6	166.7	152A8	33	7930				7270	8940	7270	30	7440	5550			
19.5L-24*	TL	W17L	495	1335	592	3880	12PR	30	40	2.3		3450		3450	2.1		2650									
			19.5	52.6						23.3	152.8	151A8	33					7600		7600	30		5840			

All tyres conform to TRA and ETRTO Standards

* This is a separate pattern from the one shown above



MPT 602

Features

- Designed for off-road and on-road services.
- Specially designed wide diagonal lugs offer self cleaning properties and resistance to side slip.
- Excellent traction in all weather and service conditions.

Size	Type	Rim Width in	Unloaded Dimension		Static Loaded Radius mm in	Rolling Circum mm in	PR	Tread Depth mm 32 nds	RCI	Load Capacity			
			SW mm in	OD mm in						Infl. Pres. bar/psi	Load Index & Speed symbol	Max Speed (kmph/mph)	Max Load (kg/lbs)
405/70-20 (16.0/70-20)	TL	13.0	405	1180	547	3470	14	24	36	3.5	148	65	3150
			15.9	42.7	19.7	125.6	16	30		51	D	40	6930
										65	D	40	8235
405/70-24 (16.0/70-24)	TL	13.0	405	1186	547	3535	14	30	38	4	151	65	3450
			15.9	46.5	21.5	139.2	16	38		58	D	40	7950
										73	D	40	9125
12.5-18	TL	11.0	325	990	455	2910	12	24	34	3.5	134	65	2120
			12.8	39.0	17.9	114.6		30		51	D	40	4665
12.5-20	TL	11.0	325	1042	480	3065	12	24	35	3.5	135	65	2180
			12.8	41.0	18.9	120.7		30		51	D	40	4795
10.00-20	TT	7.5	280	1075	509	3255	16	21	36	7.5	146	50	3000
			11.0	42.3	20.0	128.1		26		109	B	31	6610

All tyres conform to TRA and ETRTO Standards



LOADER PRO



Features

- Designed for skid steers in construction applications.
- Deep tread & strong nylon casing provides excellent durability.
- The tyre features excellent cut and chip resistance, which is particularly suitable for loose surface and heavy duty service.
- Step down lugs improves self-cleaning action.
- The specially designed rim guard provides protection against flats and wheel damage in the rim flange area.

Size	Type	Rim Width in	Unloaded Dimension		Static Loaded Radius mm in	Rolling Circum mm in	PR	Tread Depth mm 32 nds	RCI	Load Capacity	
			SW	OD						Infl. Prs. bar/psi	Load kg
			mm in	mm in							
10-16.5	TL	8.25	264	770	356	2296	10	17	29	5.2	2135
			10.4	30.3	14	90.4		21		75	4710
12-16.5	TL	9.75	307	830	384	2475	12	18	31	5.5	2865
			12.1	32.7	15.1	97.4		23		80	6320

All tyres conform to TRA and ETRTO Standards

GRIP X HD

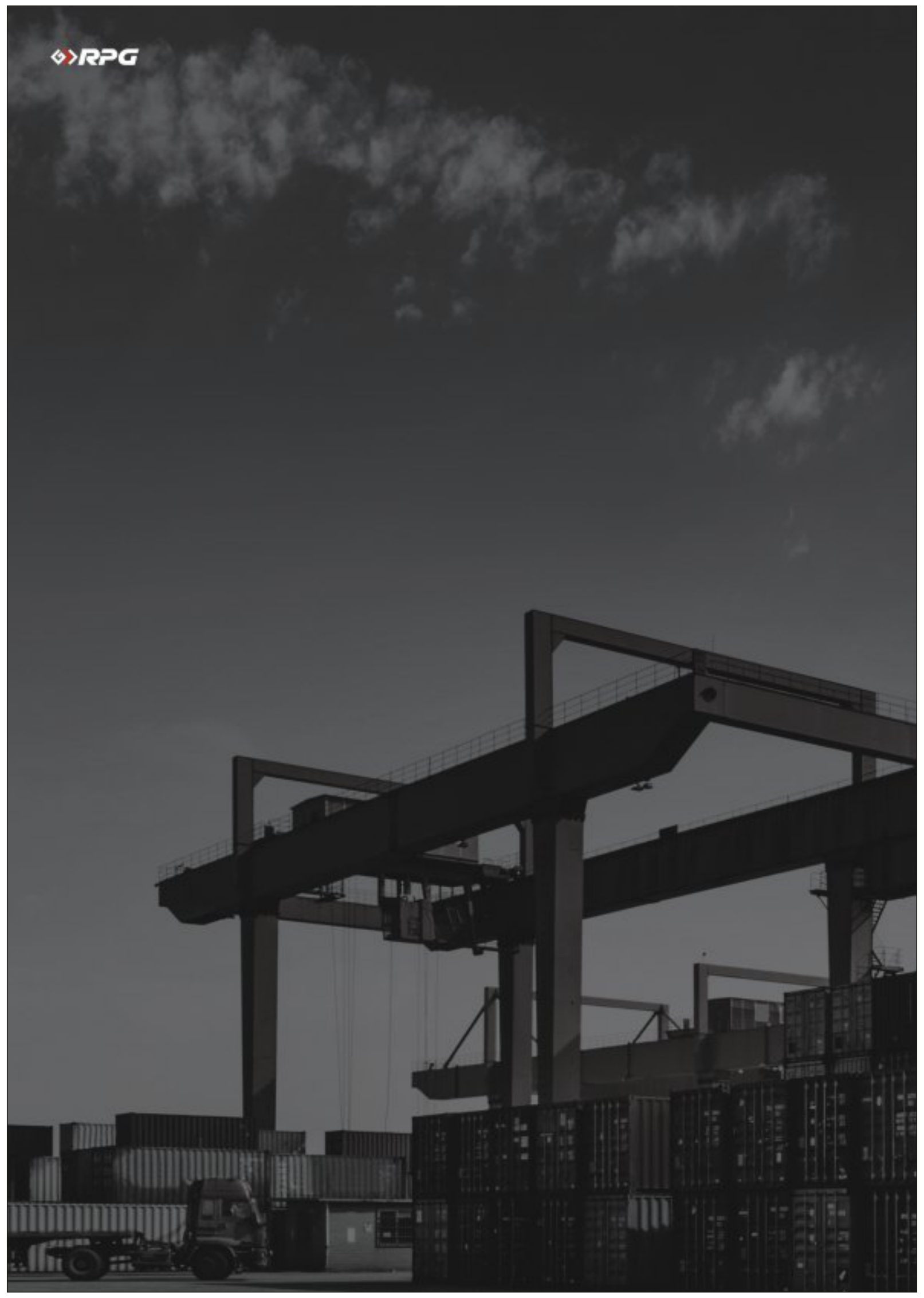


Features

- Designed for equipment in port & underground mining applications.
- Deep tread & tough casing provides exceptional durability.
- The tyre features excellent cut and chip resistance, which is particularly suitable for rough and hard surfaces.
- Broad lugs provide better stability.
- The specially designed rim guard provides protection against flats and wheel damage in the rim flange area.

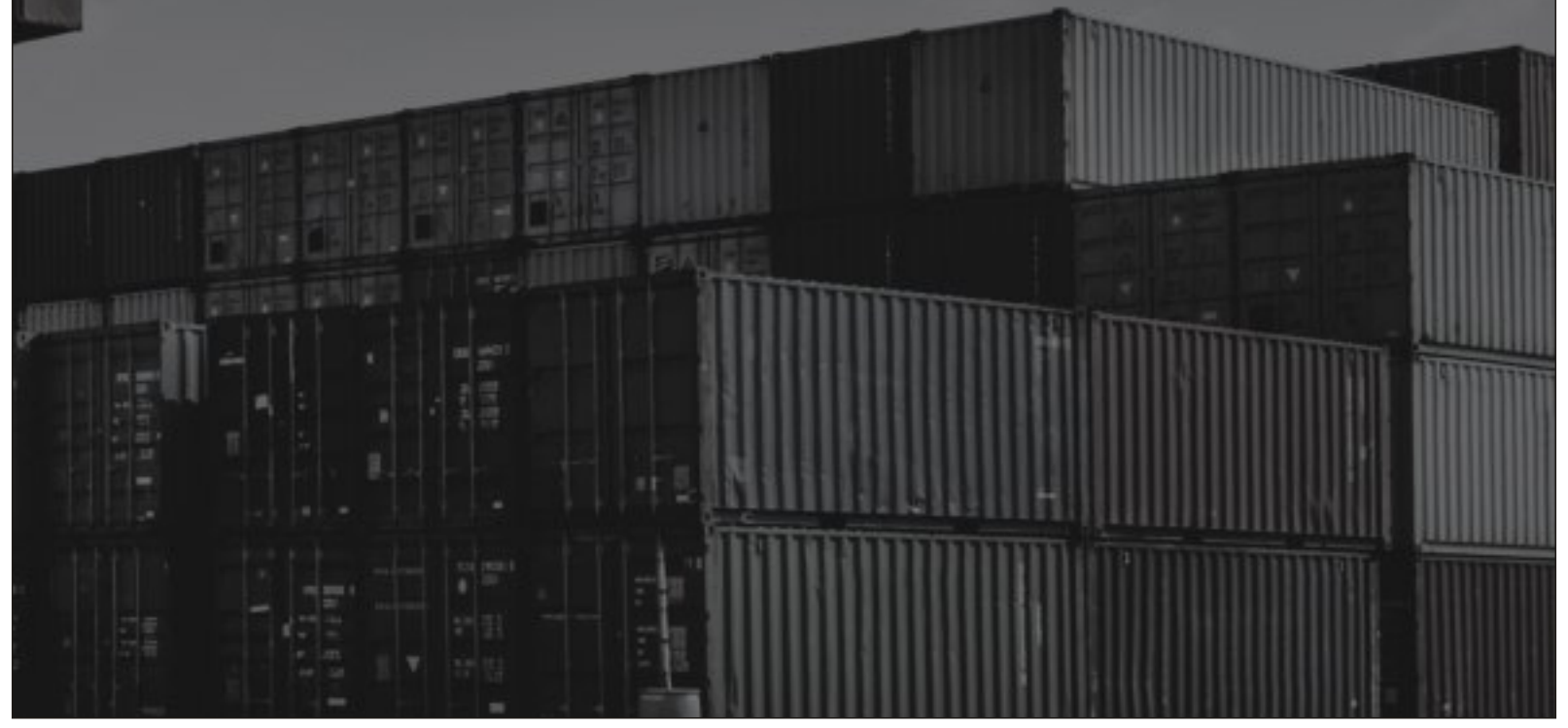
Size	Type	Unloaded Dimension				Load Capacity					
		Rim Width	SW	OD	Static Loaded Radius	Rolling Circum	PR	Tread Depth	RCI	Infl. Prs.	Load
		in	mm in	mm in	mm in	mm in	mm in	32 nds		bar/psi	kg
10-16.5	TL	8.25	265	770	356	2296	10	34	29	5.2	2135
			10.4	30.3	14.0	90.4		43		75	4710
12-16.5	TL	9.75	315	838	388	2499	12	34	31	5.5	2865
			12.4	33.0	15.3	98.4		43		80	6320

All tyres conform to TRA and ETRTO Standards





PORTS & INDUSTRIAL



PORT PRO RX

TRA CODE: IND-4



Features

- Tyres can support heavy loads under extreme working conditions.
- Special wear resistant compound gives extra life.
- Ideal for heavy duty application at ports and container handling application on hard and improved surfaces like concrete and asphalt.
- Can also be used for intermittent highway surface.

Size	Type	Rim Width in	Flange Height in	Unloaded Dimension		Static Loaded Radius mm	Rolling Circum mm	PR	Tread Depth mm	RCI	Infl. Prs. bar/psi	Load Capacity				
				SW	OD							25kmph/ (15mph)	10kmph/ (5mph)	5kmph/ (3mph)	1kmph/ (0.6mph)	Static
				mm in	mm in							Max Load kg/lbs	Max Load kg/lbs	Max Load kg/lbs	Max Load kg/lbs	Max Load kg/lbs
12.00-24	TT	8.50	1.3	325	1285	603	3803	20	35	39	9.9	8630	9320	10000	11040	12420
				12.8	50.6	23.7	149.7					19025	20545	22045	24340	27380
18.00-25	TL	13.00	2.5	498	1673	764	4952	40	56	44	10	21250	22950	24650	27200	30600
				19.6	65.9	30.1	195.0					46845	50595	54345	59965	67460
18.00-33	TL	13.00	2.5	498	1877	866	5556	40	58	46	11.4	25000	27000	29000	32000	36000
				19.6	73.9	34.4	218.7					55000	59400	63800	70400	79200

All tyres conform to TRA and ETRTO Standards



PORT-PRO TX

TRA CODE: IND-3

Features

- Specially designed for heavy duty service on forklifts and reach stackers operating on hard improved surfaces
- Self cleaning sturdy lugs are designed for increased traction.
- Flat tread with large tread width provide high ground contact area for good traction on paved surfaces.
- More rubber in the footprint offers better penetration resistance and longer service life.

Size	Type	Rim Width in	Flange Height in	Unloaded Dimension				PR	Tread Depth mm 32 nds	RCI	Infl. Pres. bar/psi	Load Capacity				
				SW	OD	Static Loaded Radius	Rolling Circum					25kmph/ (15mph)	10kmph/ (5mph)	5kmph/ (3mph)	1kmph/ (0.6mph)	Static
				mm in	mm in	mm in	mm in					Max Load kg/lbs	Max Load kg/lbs	Max Load kg/lbs	Max Load kg/lbs	Max Load kg/lbs
18.00-25	TL	13.00	2.5	510	1617	743	4781	40	32	43	10	21250	22950	24650	27200	30600
				20.1	63.7	29.3	188.2					46845	50595	54345	59965	67460
21.00-25	TL	15.00	3.0	585	1759	800	5140	40	35	45	10	25800	27800	29900	33000	37100
				23.0	69.3	31.5	202.4					56760	61160	65780	72600	81620
21.00-35	TL	15.00	3.0	580	2025	930	5987	40	37	48	10	30400	32800	35200	38900	43700
				22.8	79.7	36.6	235.7					66880	72160	77440	85580	96140

All tyres conform to TRA and ETRTO Standards



PORT-PRO SL

TRA CODE: IND-4

Features

- Flat tread with large width provides high ground contact area for good traction on paved surfaces.
- Specially formulated extra deep tread and reinforced sidewalls offer superior heat resistance for longer service life

Size	Type	Rim Width in	Flange Height in	Unloaded Dimension				PR	Tread Depth mm 32 nds	RCI	Infl. Prs. bar/psi	Load Capacity				
				SW	OD	Static Loaded Radius	Rolling Circum					25kmph/ (15mph)	10kmph/ (5mph)	5kmph/ (3mph)	1kmph/ (0.6mph)	Static
				mm in	mm in	mm in	mm in					Max Load kg/lbs	Max Load kg/lbs	Max Load kg/lbs	Max Load kg/lbs	Max Load kg/lbs
18.00-25	TL	13.00	2.5	498	1673	768	4952	40	56	44	10.5	21250	22950	24650	27200	30600
				19.6	65.9	30.2	195.0					46845	50595	54345	59965	67460
18.00-33	TL	13.00	2.5	498	1877	862	5556	40	70	46	11.4	25000	27000	29000	32000	36000
				19.6	73.9	33.9	218.7					55000	59400	63800	70400	79200

All tyres conform to TRA and ETRTO Standards



ROCK-XL

TRA CODE: IND-3

Features

- Features designed for heavy duty forklifts and container handlers operating on hard improved surfaces.
- A special wear resistant tread compound gives extra life.
- Self cleaning sturdy lugs are designed for better traction at the same time more rubber in the footprint offers better penetration resistance.
- Flatter tread with large tread width provides very high ground contact area for good traction on paved surfaces.
- Ideal for heavy duty applications at ports and Container Handling operations on hard, improved surfaces (eg. Concrete, asphalt).

Size	Type	Rim Width in	Flange Height in	Unloaded Dimension				PR	Tread Depth mm 32 nds	RCI	Infl. Prs. bar/psi	Load Capacity				
				SW	OD	Static Loaded Radius	Rolling Circum					25kmph/ (15mph)	10kmph/ (5mph)	5kmph/ (3mph)	1kmph/ (0.6mph)	Static
				mm in	mm in	mm in	mm in					Max Load kg/lbs	Max Load kg/lbs	Max Load kg/lbs	Max Load kg/lbs	Max Load kg/lbs
16.00-25	TL	11.25	2	444 17.5	1485 58.5	682 26.9	4418 173.9	32	29 37	42	9 131	15625 34450	16875 37200	18125 39960	20000 44090	22500 49605

All tyres conform to TRA and ETRTO Standards



SLICK-404

TRA CODE: L55

Features

- Specially designed for underground mines, heavy duty forklifts and loaders.
- Extra deep tread with specially formulated compound and reinforced sidewalls offer superior resistance to wear and damage, providing a longer service life.
- Flatter tread with large tread width provides high ground contact area for good traction.

Size	Type	Rim Width in	Flange Height in	Unloaded Dimension				Rolling Circum mm	PR	Tread Depth mm	RCI	Load Capacity (kg/lbs) & Speed (kmph/mph)				
				SW	OD	Static Loaded Radius	Infl. Pressure bar/psi					25kmph/ (15mph)	10kmph/ (5mph)	5kmph/ (3mph)	1kmph/ (0.6mph)	Static
				mm in	mm in	mm in						Max Load kg/lbs	Max Load kg/lbs	Max Load kg/lbs	Max Load kg/lbs	Max Load kg/lbs
12.00-20	TT	8.50	-	315 12.4	1163 45.8	538 21.2	3433 135.2	20	54 68	37	10 145	7690 16953	8300 18300	8920 19660	9840 21960	11070 24405
12.00-24	TT	8.5	-	310 12.2	1270 50	592 23.3	3759 148	20	54 68	39	8.25 120	5520 12170	6900 15210	10005 22055	11040 24340	12420 27380
17.5-25	TL	14	1.5	445 17.5	1399 55.08	648 25.51	4141 163.03	20	63 79	41	5.75 83	6600 14545	8250 18185	11960 26365	13200 29090	14850 32730
18.00-25	TL	13.00	2.5	498 19.6	1673 65.9	768 30.2	4952 195.0	32 40	77 97	44	10.5 150	21250 46845	22950 50595	24650 54340	27200 59985	30600 67460

All tyres conform to TRA and ETRTO Standards

Note : 1) PLY RATING other than mentioned can be produced for special requirements.



ELEVATA

Features

- Specially designed for heavy duty service on forklifts, material handling and mining equipment.
- Alternate continuous lug with high contact area provides maximum stability and load distribution.
- Tough casing provides excellent durability.
- Superior tread compound provides greater resistance to tears and cuts under a variety of operating conditions.

Size	Type	Unloaded Dimension					Load Capacity													
		Rim Width in	SW mm in	OD mm in	Static Loaded Radius mm in	Rolling Circum mm in	PR load Index Speed Symbol	Tread Depth mm 32 nds	RCI	Infl. Prs. bar/ psi	Lift-truck				Side Loaders			Other vehicles		
											Steering wheel		Load wheel		Static	25 15	35 22	10 5	25 15	50 30
		25 16	35 22	25 16	35 22															
6.00-9/6.90-9	TT	4.00E	160 6.3	540 21.3	245 9.6	1599 63	10PR 118A5	15 19	20	8.5 123	1320 2910	1220 2690	1720 3790	1650 3640	1990 4380	1320 2910	1220 2690	1720 3790	1320 2910	1110 2440
6.50-10	TT	5.00F	177 7.0	588 23.1	267 10.5	1740 68.5	10PR 122A5	16 20	22	7.75 112	1500 3305	1390 3065	1950 4300	1875 4135	2265 4995	1500 3305	1390 3065	1950 4300	1500 3305	1260 2780
7.00-12	TT	5.00K	192 7.6	683 26.9	311 12.2	2027 79.8	12PR 133A5	17 21	26	8.5 123	2060 4540	1905 4200	2680 5910	2575 5675	3110 6855	2060 4540	1905 4200	2680 5910	2060 4540	1730 3815
							14PR 134A5			9.0 131	2120 4675	1960 4320	2755 6075	2650 5840	3200 7065	2120 4675	1960 4320	2755 6075	2120 4675	1780 3925
							12PR 146A5			19 31	7.0 104	3000 6610	2780 6120	3750 8590	3750 8260	4530 9980	3000 6610	2780 6120	3900 8590	3000 6610
14PR 146A5	8.3 120	3250 7160	3010 6630	4225 9315	4060 8940	4910 10810	3250 7160	3010 6630	4225 9315		3250 7160	2730 6010								

All tyres conform to TRA and ETRTO Standards



PORT XL PLUS

TRA CODE: IND-4.5

Features

- Carries heavy loads under extreme working conditions.
- Special wear resistant compound gives extra life.
- Ideal for heavy duty application at ports and container handling application on hard and improved surfaces like concrete and asphalt.
- Can also to be used for intermittent highway surface.
- Higher base coverage compare to IND 4 and promotes reduced heat build up.
- More rubber and stronger carcass accounts for more life and higher stability.
- Better resistance to puncture and impact due to deep tread depth and under tread.
- Extra deep tread promotes longer life.
- Deepest tread depth in the port segment.

Size	Type	Unloaded Dimension									Load Capacity (kg/lbs) & Speed (kmph/mph)					
		Rim Width in	Flange Height in	SW mm in	OD mm in	Static Loaded Radius mm in	Rolling Circum mm in	PR	Tread Depth mm	RCI	Infl. Pressure bar/psi	25kmph/ (15mph) Max Load kg/lbs	10kmph/ (5mph) Max Load kg/lbs	5kmph/ (3mph) Max Load kg/lbs	1kmph/ (0.6mph) Max Load kg/lbs	Static Max Load kg/lbs
		32 nds	32 nds	32 nds	32 nds	32 nds	32 nds	32 nds	32 nds		32 nds	32 nds	32 nds	32 nds	32 nds	32 nds
18.00-25	TL	13	2.5	505 mm 19.9 in	1680 mm 66.2 in	768 mm 30.2 in	4975 mm 195.9 in	40	67 mm 84 nds	44	10.5 bar 150 psi	21250 kg/lbs	22950 kg/lbs	24650 kg/lbs	27200 kg/lbs	30600 kg/lbs

All tyres conform to T&RA and ETRTO Standards

GRIP MASTER-ND

TRA CODE:IND-3



Features

- Designed for heavy duty jobs to support heavy loads and extreme working conditions.
- Specially designed non directional tread ensures longer service life even on the most abrasive surfaces.
- Special heat, cut and weather resistant compound.
- A heavy duty nylon casing increases strength durability and promotes multiple retreads.

Size	Type	Unloaded Dimension				Load Capacity (kg/lbs) & Speed (kmph/mph)										
		Rim Width in	Flange Height in	SW	OD	Static Loaded Radius	Rolling Circum	PR	Tread Depth mm	RCI	Infl. Pressure bar/psi	25kmph/ (15mph)	10kmph/ (5mph)	5kmph/ (3mph)	1kmph/ (0.6mph)	Static
				mm in	mm in							mm in	mm in	mm in	mm in	mm in
14.00-24	TT	10.00	1.5	385 15.2	1368 53.9	630 24.8	4050 159.4	28	26 33	40	10 145	12500 27560	13500 29760	14500 31965	16000 35275	18000 39685
18.00-25	TL	13.00	2.5	498 19.6	1615 63.6	738 29.1	4780 188.2	40	30 38	44	10 145	21250 46845	22950 50595	24650 54345	27200 59965	30600 67460

All tyres conform to T&RA and ETRTO Standards



SLICK-431

TRA CODE: L4S

Features

- Designed for heavy duty forklifts and container handling equipments operating on hard improved surface.
- Specially formulated deep tread, reinforced sidewalls offer superior resistance to wear & damage and ensures long life.
- Flatter tread with large tread width provides high ground contact area for good traction on paved ground.

Size	Type	Rim Width in	Flange Height in	Dimension				Static Loaded Radius mm in	Rolling Circum mm in	PR	Tread Depth mm 32 nds	RCI	Infl. Prs. bar/psi	Load Capacity				
				SW	OD	25kmph/ (15mph)	10kmph/ (5mph)							5kmph/ (3mph)	1kmph/ (0.6mph)	Static		
				mm in	mm in	Max Load kg/lbs	Max Load kg/lbs							Max Load kg/lbs	Max Load kg/lbs	Max Load kg/lbs		
16.00-25	TL	11.25	2	432 17.0	1548 60.94	715 28.15	4580 180.3	32	54 68	43	10 145	15625 34447	16875 37203	18125 39959	20000 44093	22500 49604		

All tyres conform to TRA and ETRTO Standards



PORT-PRO SL

TRA CODE: IND-5



Features

- Specially designed for heavy duty forklifts and container handlers (reach stacker) operating on hard improved surfaces.
- Specially formulated extra deep tread, reinforced sidewalls offer superior heat resistance for trouble-free service & longer life.
- Flatter tread with large width provides high ground contact area and good traction on paved surfaces.

Size	Type	Rim Width in	Flange Height in	Unloaded Dimension				PR	Tread Depth mm 32 nds	RCI	Infl. Prs. bar/psi	Load Capacity				
				SW	OD	Static Loaded Radius	Rolling Circum					25kmph/ (15mph)	10kmph/ (5mph)	5kmph/ (3mph)	1kmph/ (0.6mph)	Static
				mm in	mm in	mm in	mm in					Max Load kg/lbs	Max Load kg/lbs	Max Load kg/lbs	Max Load kg/lbs	Max Load kg/lbs
18.00-25	TL	13.00	2.5	498 19.6	1673 65.9	768 30.2	4952 195.0	40	80 101	44	10 145	21250 46845	22950 50595	24650 54345	27200 59985	30600 67460

All tyres conform to TRA and ETRTO Standards

**GLOBAL SALES**

Mr. Sumit Khare
Vice President – Global Sales
Phone: +91-22-24930621
Email: sumit.khare@ceat.in

DOMESTIC SALES

Mr. Gautam Ghosh
Head – Domestic Sales
Phone: +91 - 9642328701
Email: gautam.ghosh@ceat.in

CUSTOMER SERVICE

Mr. Vinod Rao
Senior Manager – Customer Service
Phone: +91 22 2493 0621
Email: vinod.rao@ceat.in

OEM

Mr. Ankur Arora
Senior Regional Manager
Phone: +91-9099901885
Email: ankur.arora@ceat.in

NORTH AND CENTRAL**J&K, HP, PUNJAB, HARYANA, DELHI NCR, UP, UK, MP, CG**

Mr. Durgesh Sisodia
Senior Regional Manager
Phone: +91 - 9836966661
Email: durgesh.sisodia@ceat.in

Mr. Ashish Pandey
Regional Manager
Phone: +91-9984990042
Email: ashish.pandey@ceat.in

Mr. Ankit D. Mahindrakar
Territory Leader – Sales & Service
Phone: +91 9702428227
Email: centralspecialty2.service@ceat.in

SOUTH**ODISHA, AP, TELANGANA, KARNATAKA, TN, KERALA.**

Mr. Asit Pattnayak
Senior Regional Manager
Phone: +91-9937207733
Email: asit.pattnayak@ceat.in

Mr. Piyush Jain
Regional Manager
Phone: +91 - 9742271002
Email: Piyush.jain@ceat.com

Mr. Biranchi Padhi
Territory Leader – Sales & Service
Phone: +91 9777777008
Email: southspecialty.service@ceat.in

WEST 1**MAHARASHTRA, GOA**

Mr. Shyama Bandopadhyay
Senior Regional Manager
Phone: +91-9833814881
Email: shyama.bandhopadhyay@ceat.in

Mr. Tejas Patil
Territory leader- Sales & Service
Phone: +91-7666202280
Email: West2Specialty.Service@ceat.com

WEST 2**GUJARAT, RAJASTHAN**

Mr. Ahsan Siraj
Senior Regional Manager
Phone: +91 - 7838999133
Email: ahsan.siraj@ceat.in

Mr. Manas Sharma
Territory Leader - Sales & Service
Phone: +91 - 7089420150
Email: WestSpecialty.Service@ceat.com

EAST**BIHAR, JHARKHAND, WEST BENGAL, NORTH EAST**

Mr. Sunil Upadhyay
Senior Regional Manager
Phone: +91-9752435024
Email: sunil.upadhyay@ceat.in

Mr. Rajesh Singh
Regional Manager
Phone: +91-7463888597
Email: rajesh.singh@ceat.in

Mr. Kuntal Mondal
Territory leader- Sales & service
Phone: +91-8335885885
Email: eastspecialty.service@ceat.in



CORPORATE

CEAT SPECIALTY TYRES LTD.

RPG House : CEAT LTD., 463, Dr. Annie Besant Road, Worli, Mumbai 4000 030. INDIA
Tel.: +91 22 2493 0621 • Toll-free No.: 1800-22-1213 • Website: www.ceatspecialty.com